



Doris32 ASSET MANAGEMENT AND PUBLISHING PRODUCTION SYSTEM

Asset Management

Document Management

Editorial Production

Pagination

Image Management

Internet Publishing

Archiving

Data Management

SGML/XML Editing

As a feature-rich asset management and publishing production system, Doris32 answers the need for an integrated, multi-channel production solution that meets both print and electronic distribution. Customizable to meet an organization's specific requirements, the simple, intuitive interface offers the ability to not only manage and produce today's print and Internet publications, but also provides the foundation for handling multimedia assets and tomorrow's new forms of distribution.

Doris32

SYSTEM SPECIFICATIONS

Operating System:

Windows 95/98/2000/XP,
Macintosh OS 7-9, X

Database:

Oracle, Microsoft SQL Server

File system:

Windows NT, Windows 2000
Server, Unix, Novell

Hardware:

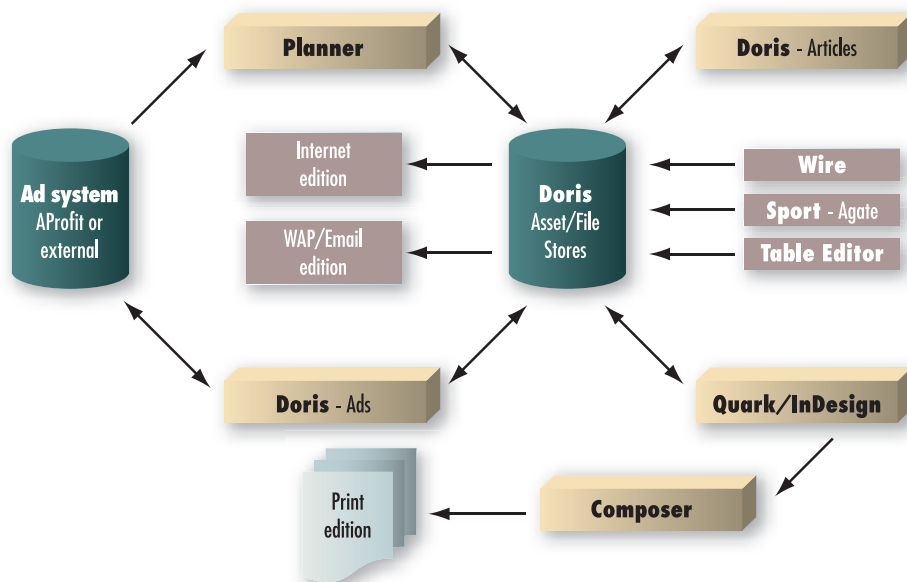
Minimum 300 MHz Pentium
III, Macintosh G3

Web browser:

Microsoft Internet Explorer,
Netscape

File support:

Doris is file-format neutral and can handle the management of any file type. Most common file types used with Doris include, but are not limited to doc, rtf, txt, wpd, qxd, indd, pdf, ppt, jpg, eps, bmp, gif, tif, xml, html, avi, mpg, ai, fhx



Staff members throughout the organization will see the benefits of Doris. Designers, production specialists, reporters, editors, photographers and web managers will find Doris flexible and easy to use. Its infinite scalability supports any number of users through the Doris client or browser-based interface, providing support for users in the office as well as remote locations. Tied together with its supporting modules, Doris fulfills the entire spectrum of publishing needs including asset management, editorial production, pagination, ad tracking, ad proof management, archiving, image management, Internet publishing, Wireless publishing and ePapers.

With the Doris32 asset management and publishing production system providing a central foundation, your organization can put an entire suite of production solutions under one umbrella. The write-once, publish-many environment Doris offers brings your articles, images, graphics, ads and pages together with the openness and flexibility to customize a workflow that automates the movement of information through the planning, creative, production and post-production process specific to your newspaper's needs. Add in tools for edition management, automatic ad layout, ad booking, web publishing and electronic distribution and you've got a solution that offers complete control of the entire production workflow.

Your staff will see benefits by having the freedom to spend more time on the creative process and less time on managing and enforcing a workflow. Since the tools are the same, users only have to learn one interface regardless of whether they're working with images, articles, pages, ads or photo assignments. By working with the same concepts, your staff members are out of the training room and back at their desks that much quicker.

Key features

Platform independent: Doris runs on both the Windows and Macintosh platforms so your organization does not have to invest in new client hardware.

Media independent: Doris is capable of managing any file format for text, video, audio, and graphics, allowing your organization to use the tools that best meet your needs. Since it's file-format neutral, Doris also leaves the document editing to the tools that do it best, allowing your organization to continue using the design suites and image editing tools your staff is comfortable with, thus reducing the training and stress associated with the implementation of a new system.

Web accessible: A companion Doris Web Server interfaces with your Internet server to provide access to your database and documents through a standard web browser, offering the capability to give staff members access to their work when they are at home or traveling. Customers can benefit too with tools to interact with your staff via the web.

Scalable: Doris can work in environments from a single user to thousands.

Searchable: Doris offers a robust full-text index, which, when combined with the database, offers user an archive with virtually limitless search possibilities for your articles, images and pages in the same interface used for live production.

Traceable: Doris automatically maintains a customizable audit trail of all actions taken on each document or data record. Useful for troubleshooting errors and tracking billable time.

Link and attach: Keep common assets, such as an article and its images, with the linking tools of Doris so packages can move through the workflow as group.

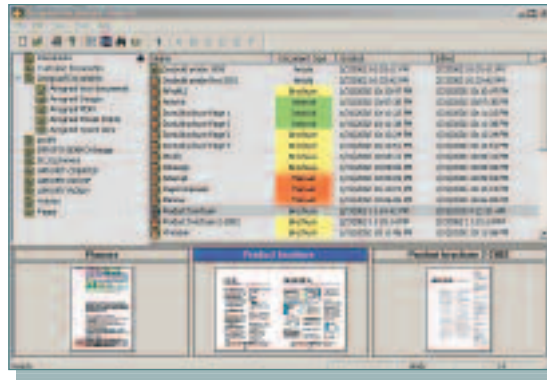
CD-ROM support: Organize and manage your CD-ROM burning and storage offline and through CD jukeboxes.

Customizable: There is no “cookie-cutter” solution. Every organization is different and that needs to be taken into account when designing an asset management system. We recognize that organizations have unique needs and workflows and have designed Doris with a high degree of flexibility to meet those needs. From the database to individual user functions, Doris gives you the tools to tailor a solution specific to your organization’s needs.

- **Database:** Each installation begins with an empty database; there is no predefined configuration. Using our system management tool, configure the database to manage only the information important to your organization.
- **Scripting:** Through a robust scripting language, Doris offers a toolbox full of functions and features through which users and system managers can customize tools to meet your workflow requirements. With the scripting tools, validate data entry, enforce workflow rules, and provide users “one-touch” access to tasks that now require multiple steps to complete.
- **Automate tasks:** Combine the Doris scripting language with its scheduled tasks to process routine functions, letting your staff focus on more important duties.
- **Security:** Build a system-wide security structure that protects your documents. Manage user rights on an individual and group level to control access to documents and data.
- **Interface:** Design an interface that puts the data your staff needs in the most efficient locations. Using Visual C++, header dialogs are fully customizable down to the individual user level.
- **Views:** Customize database views to help users easily find the assets they need.
- **Importing:** Doris can be configured to captures and imports into the asset management database any type of document. Set up custom importing routines for wire articles and images, monitor email accounts to capture messages and attachments and watch FTP folders for submitted material.

Archiving: Archiving is an integrated component, so with Doris, maintaining an archive is no different than maintaining your live production systems. The same tools that let users find and work with their articles, ads, images and pages are used to manage your archive. To users, there is no difference between the archive and production system unless you tell them.

- Maintain searchable, full-text indexes for all of your material.
- Integrate your archive into your website to give readers and customers access to your assets.
- Provide links between articles, images, ads and the pages on which they appear.
- Automatically handle the routing of material from live to archive systems.



The Doris interface organizes assets through user-definable views, with color coding available for easy identification.

Simplify file management: Doris centralizes file storage, so everyone knows where to find their work. Back office IT departments benefit as well. Centralized file storage simplifies backups and hardware management.

Many systems in one: Save time and money by consolidating your needs into one system. Doris offers the capability to manage editorial and advertising needs as well as live production and archive tasks, decreasing your system overhead by not having to maintain and train separate tools.

Training made easy: Minimize training time and expenses. With Doris, you work with one interface regardless of file type or purpose so you only train one system one time, letting your staff get back to work sooner.

Automate: Free staff members from having to spend time processing routine tasks such as archiving, file transmissions and general maintenance. Doris offers configurable scripts to handle these tasks on predefined schedules.

Streamline system overhead: Doris has been designed with efficiency in mind by integrating many crucial tasks and functions into one interface, thus reducing the number of systems your IT department must manage and your staff must learn. Users can work with documents, images and data all from the same interface and the concepts to manage each are the same.

Advertising, graphic design

- Track and store design elements.
- Centralize file management.
- Maintain audit trails for proper billing.
- Maintain libraries of frequently used logos and artwork.
- Provide clients Internet- and email- based proofing to save on postage and delivery time.
- Maintain jobs archive.
- Provide clients a browser-based means of submitting job orders and material.
- Automatically transmit jobs to printers and publications via email, FTP, Modem or ISDN.

Publishing

- "Write-once, publish-many" architecture lets you edit once and publish to print, online and wireless media.
- Paginate with QuarkXPress or Adobe InDesign.
- Manage, pages, copy, images and graphics from a central asset management database.
- Provide clients with Internet- or email- based proofing.
- Automatically transmit final pages to your printing site via FTP.
- Manage photo and story assignments through a browser-based interface.

Syndicates, news & image agencies

- Track and store images, articles and graphics in a full-text searchable database.
- Automatically dispatch content to subscribers via email or FTP.
- Provide subscribers with a browser-based content retrieval system.
- Generate extra revenue by making your content available to the general public.

- Establish a routing workflow to capture page output and distill PDF files for archiving.
- Maintain a customizable hierarchy keyword list.
- Maintain a common interface that is document-type independent. Using the same interface to search for images, ads, articles and pages reduces training time and system maintenance.

Editing Made Simple

With electronic forms of distribution such as the Internet, electronic papers and wireless devices joining print products to become integral parts of a news organization's operations, it is necessary to have tools with which users can quickly and efficiently write and edit the content once and still be able to publish it to multiple outlets without having to re-edit or convert.

Choose between Anygraaf's own SGML/XML text editor, or for Adobe InDesign users, Adobe InCopy as your text editor. Either way, users will have an editing tool that gives them bi-directional, write-once-publish-many integration with page design programs, easy editing and formatting that lets reporters and editors focus on the content and not the markup. Whether the text is destined for print or electronic publication or both, the tools and the markup concepts are the same. Users write and mark unique elements of a story such as headlines, body type, bylines and captions through easy to use style sheets. Eddie gives users instant access to available element styles and makes sure that only those styles allowed in a particular article or element are among those to choose from.

Bi-directional editing and pagination with QuarkXPress or Adobe InDesign means reporters and editors can write and fit copy against an article's exact layout, saving time on deadline by working with a WYSIWYG view of the article, including images, exactly as it appears on the page with overset text indicated.

For text-driven workflows, Eddie gives reporters and editors design control with the ability to choose article frames and typography sets on the fly -- tools that help publish the same article in multiple publications with different design styles.

A web interface also allows reporters and editors to work on articles when out of the office. Custom interfaces also allow readers to submit content for consideration such as wedding announcements and letters to the editor directly into the system, saving staff members time from having to manually key in the material.



Eddie, the SGML/XML text editor offers an editing tool for both print and electronic publishing. A WYSIWYG preview provides H&J results as the article appears on the page.

ELECTRONIC PUBLISHING & WEB COLLABORATION

Whether it's publishing news or allowing readers and customers to interact with your organization, an Internet presence is a must and so should be the tools to make it happen. An integral feature of the Doris32 system is its integrated electronic publishing and web collaboration tools to maintain your website, provide staff with remote access, publish archives and sell documents.

Publishing on the Internet is a must, but having to re-edit copy shouldn't be. An integral feature of the Doris system is its integrated Internet publishing tools. Internet publishing with Doris helps you produce HTML and XML documents from your text, image, audio and video assets. Use Doris to multi-purpose your existing content or as a routing and management tool to track and handle web-only material. Either way, Doris provides the interface to seamlessly build and maintain your website.

Go beyond building your website to give readers added features to enhance the value of your product. Integrated archives, keyword searches, searchable events calendars and Doris keyword links give readers more choices and allow you to develop revenue generating campaigns for both advertising and editorial content.

Extending remote access capabilities through the Doris Web Server offers staff members and customers many benefits. Staff members can stay in touch when out of the office with tools to work on and submit new articles, images and other documents. Customers can take advantage of value added services that allow them to review ad proofs and submit material.

Electronic Publishing

- Publish from a variety of text file formats including Microsoft Word, RTF, QuarkXPress XTG, XML, ASCII text, and SGML. Metadata from your database can also be published to your website.
- Doris is media format neutral and allows you to define templates to publish documents and metadata to any format including HTML, XML, ASP, ASCII text and WML.
- Content coding is by style sheets, so editors do not need to be familiar with HTML, and uses the same tools and conventions that drive print publishing.
- Freely define the appearance of the web edition through predefined HTML templates.
- Manually publish your website or maintain an automated schedule and let Doris do it for you.
- Manage multiple departments and divisions on your website.
- Publish summaries to main pages with links to the full article.
- Publish articles with attached images or audio and video clips.
- Integrate Doris archive and full-text indexing to add search capabilities to your website.
- Automatically prepares images for web presentation.
- Integrate with Doris Web Server to provide dynamic, value added features such as archive searching and sales, "email article to a friend" links and event listings.

Web Collaboration & Remote Access

The Doris Web Server offers a robust set of tools through which organizations can build interfaces to manage documents, edit text, submit new or updated documents and search archives.

Doris Web Server also offers the ability to develop customized browser-based systems for data management. Some examples include story budgeting, photo request and scheduling, and source tracking and management.

- Integrate electronic and print publishing.
- Provide readers with value-added tools to search archives and submit material online.
- Give customers greater interaction with sales and creative services departments.
- Help reporters and editors be more productive out of the office with browser-based tools to work with articles, images and pages.



Internet publishing



Image management



Ad tracking

Your customers will benefit from Internet-based means of interacting with your staff. With Doris Web Server allow customers to:

- Submit complete ads or supporting material for publication.
- Review proofs of work in progress and submit comments back to the creative services department.
- Approve contracted work such as ad design.

Integrated into your website, Doris Web Server can be customized to:

- Maintain a searchable events listings for calendars published on the web. Allow the public to submit events for consideration. Internally, manage creation and editing of material via a browser interface.
- Integrate with a Doris-managed text, image or page archive to provide browser-based searching of stored material.

Asset Sales & Distribution

Put your archive to work. Integrate your Doris archive with the Doris Web Server and the IProfit asset sales and distribution system to provide users with a web-based method to search and purchase your assets.

- Provide customers with a web interface and shopping cart to purchase assets.
- Manage customer profiles including contact information, pricing groups, invoicing and delivery method.
- Invoice work-related expenses such as lab fees, travel time, hourly rates.
- Monitor sales history on individual documents.
- Price campaigning and budgeting.
- Manage royalty payments.

HIGHLIGHTS

- Maintain house style: Article layout templates include style assignments and relationships so text is automatically formatted as it flows on the page.
- Give designers and layout specialists more time to focus on display and content editing.
- Reduce page building time to a fraction of what it used to be.
- Bidirectional link between pages and articles insures the text on the page is the text on the website and in the archive.
- Combine individual article layout templates into page layouts that can be applied through Planner.
- Automatically place display and classified ad reservations on pages.

PAGINATION

Pagination is made simple with the Doris32 XTension for QuarkXPress or the Doris32 PlugIn for Adobe InDesign. Recognizing that designers and copy editors sacrifice necessary creativity and editing time to the mundane tasks of building boxes and insuring accurate spacing, the Doris32 pagination tools are designed to help layout specialists reclaim time for creativity.

The Doris32 XTension for QuarkXPress and Doris32 PlugIn for Adobe InDesign give users a choice of how they build their pages with tools to keep pace with today's deadlines. Your organization can work with QuarkXPress or InDesign on either the Macintosh or PC platforms or both. Depending on the nature of the page, users can employ a text-driven or layout-driven approach to their pagination work.

To save time, article layouts can be predefined and stored in a custom library for easy application. The article templates store everything that needs to be known about the article including the geometry or shape of the article and style sheet assignments. Once attached to a story, editors can get exact H&J results based on the article's placement on the page. These layout templates can be applied on the page by designers or from within the SGML/XML text editor Eddie by editors or reporters, well in advance of page makeup. The result is that a complete article, including its geometry information, is delivered to the page when the article is placed without ever needing to manually draw a text or image box.

Display and Classified ads can also be automatically placed on the page. When used in conjunction with the Planner edition management and ad layout system, the Doris32 XTension and PlugIn automatically apply all ad reservations to the page and import ad material when ready, thus providing one tool for both editorial and advertising layout needs.

For multi-paper publishing environments that share stories but have different formats, Doris Typography sets offer a quick and effective tool that allows users to format the article with logical element names that get matched up with the corresponding physical style sheets for each paper.

Key Features

- Provides support for both layout-driven and text-driven workflows.
- Supports drag & drop of articles, images and ads from the Doris asset management system.
- Maintain a bi-directional link between pages and their elements, with automatic update of placement status.
- Automatically check for updates to placed articles, images and ads and reload content.
- Enforce workflow rules by preventing placement of articles and images on a page until designated status is reached.
- Automatically load recurring articles and standing features without user intervention.
- Supports the use of Microsoft Word or Anygraaf's SGML/XML-based editor for text editing.
- Maintain bi-directional link with articles to insure that the text on the page is the same as the text that gets published on your website and to the archive.
- Configure and automatically maintain appropriate space between article elements, and modules.
- Automatically justify articles.
- Maintain a library of predefined article layouts to speed up the layout process.
- Apply borders and frames from a customized library.
- Apply gutter and ad rules from a customized library.
- Automatically create page previews for monitoring and tracking.
- Automatically manage and define page folios and flags when used with the Doris asset management and publishing production system.
- Reserve articles from the page.
- Supports multi-page documents.
- Generates WYSIWYG preview of each article as it appears on the page for viewing in text editor when utilizing H&J engine.
- Integrates with the Planner page and edition planning tool to automatically place ad reservations and ad material.
- Integrates with Doris archive capabilities by providing full-text support for indexing of pages.
- Support for saving page as EPS for output.
- Publish the same article in multiple formats with typography sets.
- Extract article content as raw text or in SGML/XML structure.



The Doris32 XTension for QuarkXPress and PlugIn for Adobe InDesign provide integrated support for pagination and ad management.

LAYOUT AS EASY AS 1. 2. 3.



1. Define a news hole



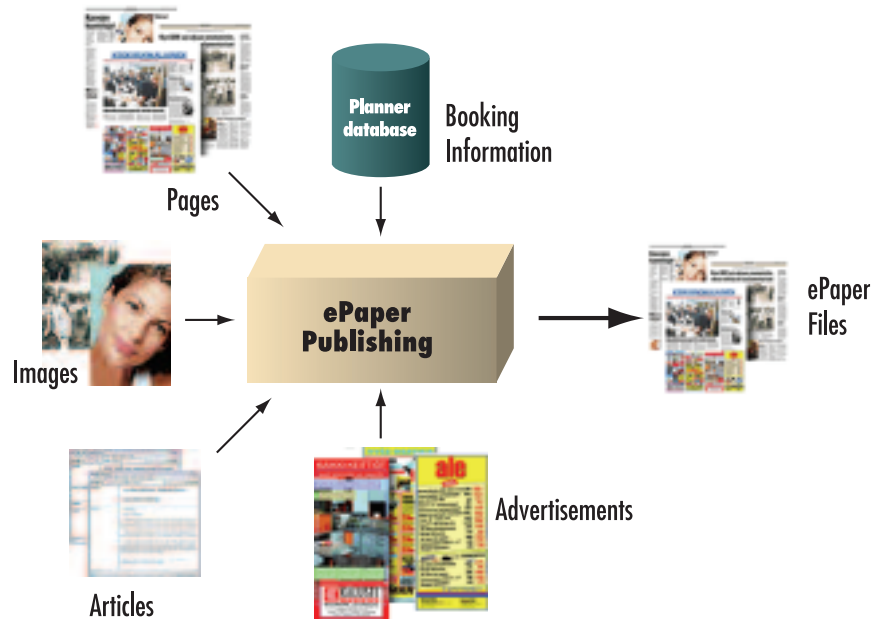
2. Apply a predefined article layout geometry



3. Drag and drop the article and image from Doris

- Save time and money by leveraging existing Anygraaf print production investments.
- Give readers another way to read the paper.
- Build and maintain archive editions available for distribution to internal and external customers.
- Extend the reach of print advertising.
- Generate new revenue with subscriptions to an electronic paper.
- Readers get easy navigation with the ability to browse the paper by page or by section.

Enhance your website and create production efficiencies with the Doris32 asset management and publishing production system by posting an exact replica of your print edition on the Internet. Anygraaf's ePaper tools take the pages produced with Doris and automatically builds an online edition giving readers the same look, feel and quality they have come to expect.



The ePaper tools give publishing organizations additional features to augment their traditional Internet publishing workflows as well as readers another way to read the paper.

With an electronic edition, Internet readers get an exact replica of the printed publication with the ability to browse the issue page-by-page. Readers can click on page elements to view directly any article, image, graphic or ad. Users can also perform a keyword text search to find articles and a PDF of each page can also be made available for quick viewing or download.

Publications benefit by taking advantage of work already done with the Doris32 system to produce the printed product. Since the ePaper tools work with PDF or postscript files and the articles, images and ads have already been produced for the print edition, there is no additional effort needed to produce an electronic edition. Once the ePaper is made, additional tools let your organization maintain searchable archive editions for internal and external customers.

Readers benefit by having an addition option for reading your news. With the same look as the printed page, readers can browse the ePaper in the same way they use the printed edition.

Finally, advertisers benefit from the extended reach an electronic paper gives their ads.



Anygraaf USA, Inc
 5235 Westview Drive
 Suite 100
 Frederick, MD 21703
 P: 301-926-1805
 anyinc@anygraaf.com
 www.anygraaf.com

© 2006, Anygraaf USA, Inc.

Adobe InDesign, InCopy, Photoshop and Illustrator are trademarks of Adobe Systems Incorporated. QuarkXPress is a registered trademark of Quark Inc. All other trademarks are the property of their respective owners. Anygraaf USA, Inc reserves the right to change at any time without notice, the features, functionality and services described in this brochure.