



Automation Toolkit

Modular Solution

Extreme Speed and Flexibility

Simple and Intuitive

Save Time

Save Money



Move.it

As Simple as 1. 2.. 3...

Modularity

Move-it takes a toolbox approach to workflow automation. Move-it will work in any existing workflow environment as a powerful automation tool. Move-it also provides sophisticated load balancing for PrePage-it users who want to distribute the processing across multiple servers.

Flexibility

Move-it is an open workflow automation tool. Move-it is scalable; purchase and install only what is required then add on as needed. Automate-it takes advantage of easy setup and uses hotfolders so that when one tasks is complete the results can be processed easily by any other task.

Simplicity

Move-it is easy to use and installs in a snap. From the workflow editor drag and drop icons representing various operations or tasks onto the canvas and link them together. Double any icon to view and modify the parameters of each task then sit back and let Move-it take over.

Economy

Move-it is a cost effective solution for anyone wanting to add automated functionality to their existing workflow. Move-it will automate repetitive tasks freeing up valuable operator time while at the same time automating difficult tasks that might otherwise lead to errors, wasted time and wasted money.

Key features include...

FTP Download

FTP Upload

Hot Folders

Adaptive Routing

File Renaming

Job Sorting

Load Balancing

File Moving & Copying

Housekeeping

Email

Command Line Interface

Scriptability for:

- Pitstop
- Asura
- Jaws PDF Server
- Acrobat
- Photoshop
- PStill

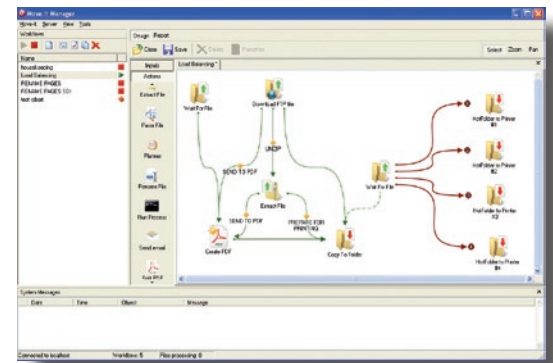
and much more...

With Optional Preflighting, PDF Creation, PDF Splitting, PDF Merging and PDF Cropping

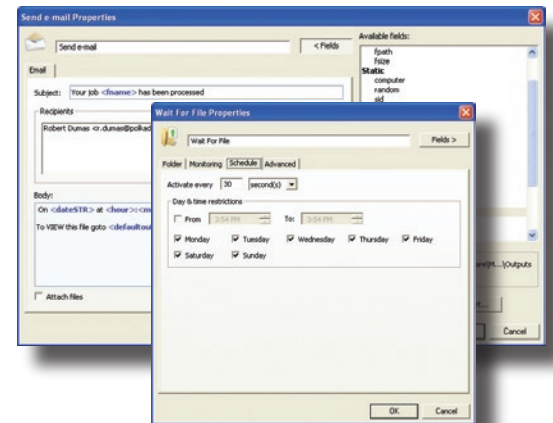
Want to know more? Contact us today and we will happily answer all of your questions



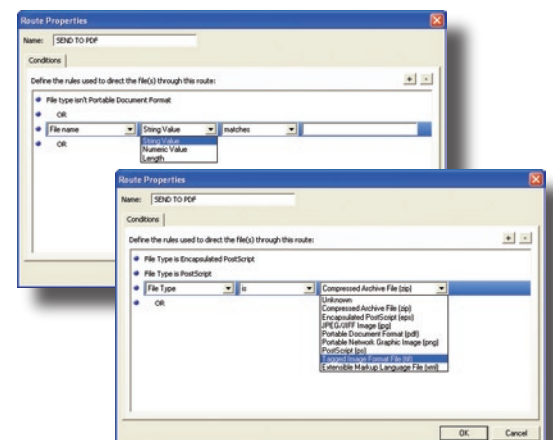
info@polkadots.ca
Tel: +1.514.595.6866
www.polkadots.ca



1. Create complex workflow routines with ease. Simply drag and drop elements onto the workflow canvas and link the pieces together.



2. Apply customized parameters for each module. Schedule when actions will take place, send email even use command line processes to automate applications.



3. Use the "Dynamic Routing" and "Decision Logic" functionality to automatically process files according to specified parameters.